



LUND
UNIVERSITY

LUND UNIVERSITY
INNOVATION

Year in Brief 2019



From ideas to innovations

LU Innovation is the hub for innovation and commercialisation at Lund University. We support students and researchers to convert ideas and research findings into successful new products, services or methods.

Through VentureLab we stimulate innovation and entrepreneurship among students. Through LU Holding, the University's investment company, we can work operationally to bring new innovations into society.

Together, we contribute to sustainable growth through the successful use of knowledge and research at Lund University.

No ready-made solutions

We provide support to the whole University and the projects we work with range from student ideas that are close to the market to extensive, complex research projects.

A lot of the work is required at a very early stage. All projects are different but usually they have one thing in common: there are often more questions than answers.

Our primary task is to guide and move the projects forward. In 2019 we met hundreds of researchers and students. As a result of these meetings, we received 488 new ideas, 248 of which were taken on and developed.

Pipeline

	2015	2016	2017	2018	2019
New ideas Teachers/Researchers	104	125	116	118	150
New ideas Students	126	220	279	218	338
Commercialisation projects	81	103	139	206	248
Companies formed	10	20	15	16	21
New portfolio companies	6	6	12	10	8
Patent applications*	23	18	14	6	16
*of international PCT applications	7	12	4	0	4

Ideas: The number of identified ideas where a first initial evaluation indicates it is worth pursuing.

Commercialisation projects: The number of ideas that have at some point throughout the year been worked on actively.

Patent applications: The number of patents filed, including PCT applications based on earlier priority.

Company formations: The number of companies formed from the commercialisation projects being worked on by LU Innovation.

New portfolio companies: the number of companies where LU Holding AB has taken an equity share.



How we do it

Business development

Mapping the situation
– support to develop
a sustainable plan.

Commercialisation

Company formation,
licensing deals and
investments.

Financial support

Test, verify or accelerate
the idea.

Contacts & network

Where to go and who to
talk to.

Intellectual property & legal support

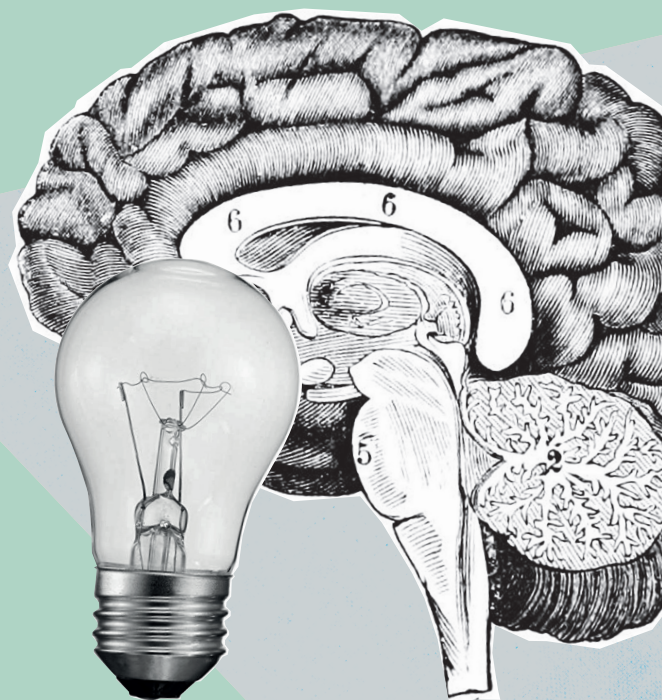
Expert advice on patents,
copyright, agreements
and contracts.

Educational activities

To inspire and to educate.

New solutions to societal challenges

Innovations do not necessarily involve patents and company formation, but rather transfer of know-how. The last couple of years, we have seen a number of great ideas from Social Sciences and Humanities and Theology. We have actively been working on how to support students, PhD students and researchers alike, across all faculties.

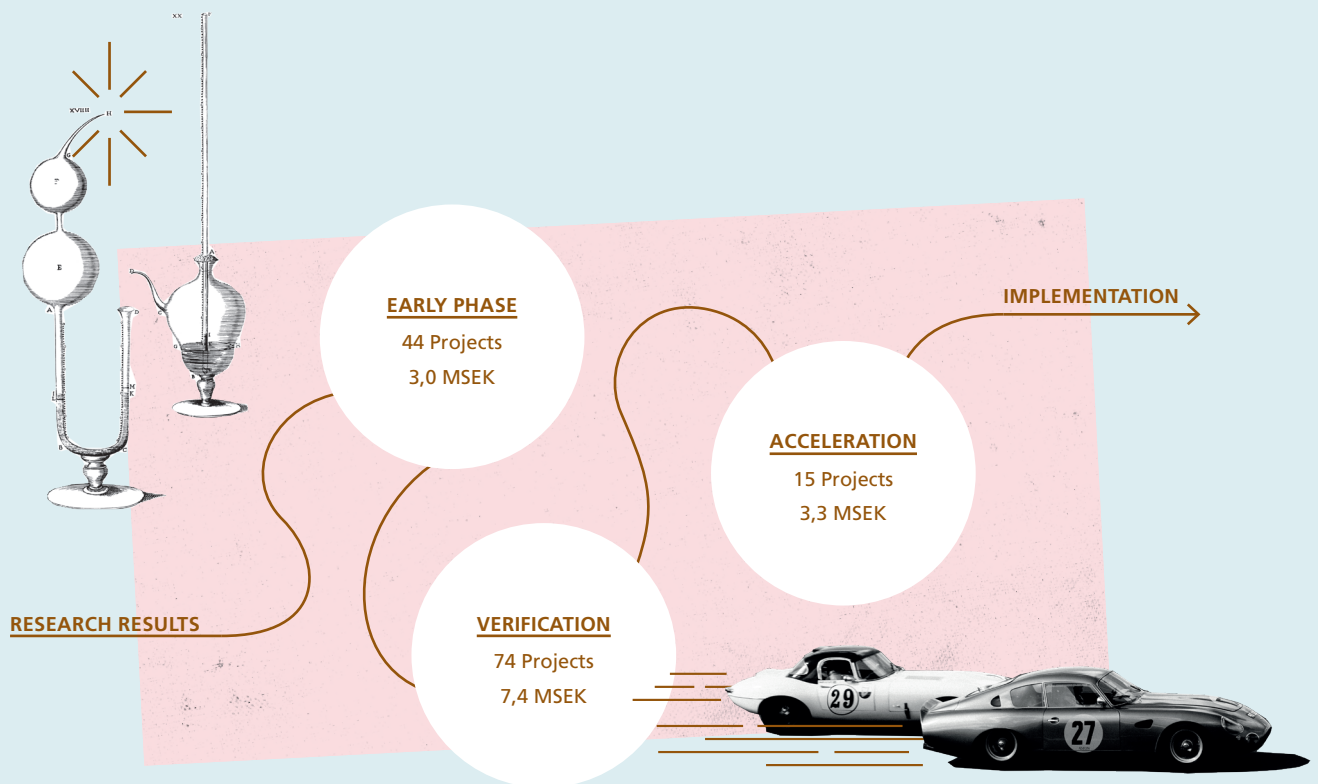


Is it all about the money?

The primary driving force among the researchers and students we meet is very rarely money. However, nearly everyone needs money to be able to drive an idea forward.

Through different financing opportunities, we can support and accelerate the ideas. By testing and verifying the innovative potential, we can reduce risk and improve market potential.

We offer different forms of financial support to enable testing, verifying or accelerating an idea. In 2019, 108 projects from students and researchers received financial support from LU Innovation. We also help find external investors who can provide financial backing to the projects.



The figure gives a simplified view of how the grants were distributed in the different phases for 2019. A specific project can occur, and receive funding, in several phases during the period.

How to create an innovative culture

We do not solely support ideas that can be commercialised. We also actively work for an innovative culture at Lund University.

LU Innovation organises lectures, presentations and courses to inspire and educate. In addition, through activities such as Leapfrogs, Lund Innovation Challenge and the Future Innovations prize, we are able to encourage and reward students and researchers who wish to develop an idea and try entrepreneurship.



Lund Innovation Challenge

For the third year in a row, VentureLab organised the Lund Innovation Challenge, one of Northern Europe's largest innovation events for students. This year, Sony was the main partner.

More than one hundred students from different disciplines participated and, over an intensive weekend, they had to find solutions to societal challenges with the help of speakers and workshop leaders from Sony, UNOPS and TetraPak, among others.



Lund University and Sparbanken Skåne's Award for Future Innovations

Together with Sparbanken Skåne, LU Innovation awards ideas that can lead to future innovations. In 2019, we received a record number of 139 entries from students and researchers at Lund University and six ideas shared the honour and prize of SEK 200 000.

Leapfrogs

With funding from Leapfrogs, students are able to work full time on a business idea for three months during the summer. For eight years, Leapfrogs has fostered entrepreneurship and provided support to a total of 294 students. In 2019, we received business ideas from 217 students in the region and 35 of them were granted support funding of SEK 30 000 each.

From research to start-up

In 2019, 21 companies were founded from ideas supported by LU Innovation. LU Holding became an active shareholder in 8 of these.

LU Holding, the university holding company, works operationally to bring innovations to market by investing in and supporting research-based start-up companies. LU Holding invests in projects with significant international market potential and a unique concept that competitively solves a clear customer need.

Welcome to LU Holding

AlignD Systems brings affordable advanced nanowire platform technology to the biosensor market.

AlixLabs manufactures sub-10 nm semiconductors in a much simpler and more affordable way.

Bionamic offers software for handling and analysing data in antibody drug development.

ComVal Research develops a tool for analyzing and evaluating internal communications in organisations.

Cell Invent develops new human disease models in order to find Alzheimer's cures.

HomePal is a PropTech-company offering digital facility management. Started at VentureLab's incubator.

SB1Pharma offers a new, patented approach to identify and treat cancer tumours that primarily affect children.

Voice Diagnostic uses algorithms and artificial intelligence to detect voice changes and use these with the aim of diagnosing various health problems.

The conditions for success

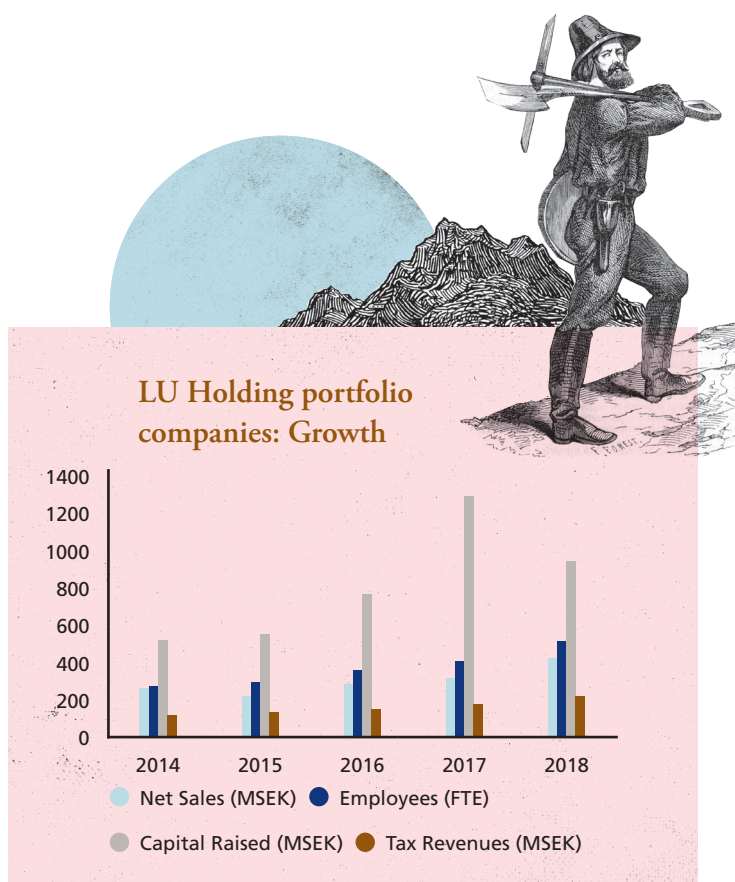
LU Holding invests at an early stage when there is considerable risk. Once the companies attract external investments, exit occurs by selling shares or by industrial sale. Any return on the shares is reinvested in new commercialisation projects and portfolio companies.

In addition to the financial support, LU Holding engages in board work to help provide young companies with experience, contacts and strategic decisions. An investment from LU Holding also gives the companies credibility and access to a network of potential investors, contacts and partners.

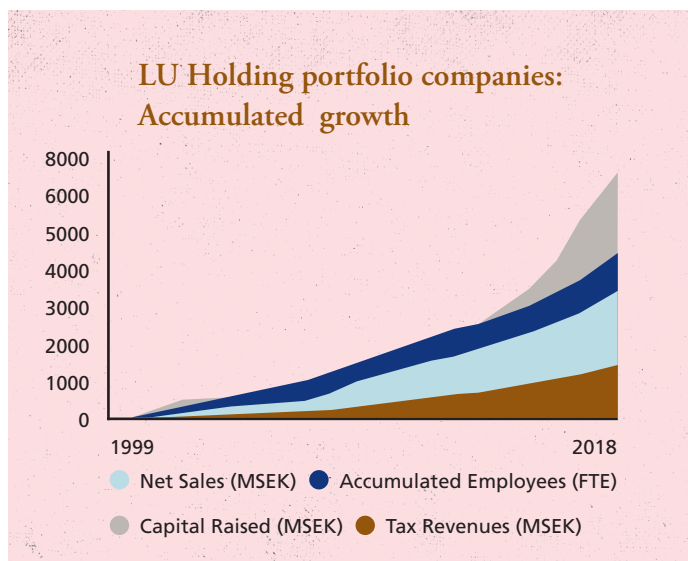
Our contribution to growth

Since 1999, LU Holding has contributed to the creation of 116 new companies, which together have employed over 4 600 full-time equivalents and generated more than SEK 1.6 billion in total tax revenue.

For the companies that LU Holding invests in, it is often a long road from brilliant idea to profitable company. Therefore, the effect of the investment is often delayed, as is also demonstrated by the graph.



The combined annual figures for all companies in which LU Holding AB has held equity over the years. In 2018, the portfolio companies had a total net turnover of SEK 423 million, paid SEK 216 million in tax revenue and employed over 509 full-time equivalents (FTE). The portfolio companies raised a total of SEK 947 million in venture capital.



Accumulated growth for the companies that LU Holding AB has invested in since 1999. These companies have employed over 4 600 full-time equivalents, raised over SEK 6.9 billion in venture capital, had an accumulated turnover of SEK 3.6 billion and contributed SEK 1.6 billion in tax revenue.

Lund University is an old, broad and innovative university. We are united in our efforts to understand, explain and improve our world and the human condition. Many scientific breakthroughs and pioneering innovations of great significance to our society have originated here.



“Our innovation activities are doing extremely well at the moment. A contributing factor is the move towards a culture change within the University. Some research, but not all, is best utilised through commercialisation and this view is becoming more widespread and accepted. An increasing number of researchers and students want to see their ideas converted into products and services, and are looking for help along the way.”

TORBJÖRN VON SCHANTZ
Vice-Chancellor, Lund University